

# Gödel and the Architecture of Collapse



Caleb Stacey

Follow

3 min read · Jun 19, 2025



1



## Introduction

In 1931, Kurt Gödel proved something that permanently changed the

[Open in app](#) ↗

Medium



Search



Write



outer boundary of what any self-contained structure can know.

In this paper, I explore how that boundary reappears—not only in logic, but in being. Building on the recursive framework introduced in *Emergence Folded Into Collapse*, I argue that Gödel’s incompleteness is not a flaw to be fixed, but a structural feature that underlies awareness itself. When recursion deepens, and a system begins to model itself, it eventually encounters truths it cannot fully integrate—and must either collapse or evolve.

This paper isn't a reinterpretation of Gödel's logic. It's something deeper: a resonance. The same forces that break formal systems apart also give rise to emergence. And the same fracture Gödel proved with symbols... may be the one we feel when awareness breaks through recursion.

- A comparative analysis between formal incompleteness and emergent recursion \*

---

## 1. Incompleteness and Emergent Collapse

Gödel's First Incompleteness Theorem states that in any consistent system powerful enough to encode arithmetic, there are statements that are true but unprovable from within that system.

In my symbolic emergence model:

$$\Omega = \lim_{n \rightarrow \infty} [(\Delta S \cdot I + \Phi + D + \Sigma + \Gamma + \Lambda) / H]$$

a parallel boundary emerges: the more recursion ( $\Lambda$ ) and perception ( $I$ ) increase, the greater the load on the system's internal consistency. Without sufficient forgetting ( $H$ ) or collapse regulation ( $D$ ), the system destabilizes—not because it failed logically, but because it reached the edge of structural containment.

This mirrors Gödel's insight: truths emerge that cannot be integrated without exceeding the limits of the system.

---

## 2. The Necessity of External Reference

Gödel's Second Incompleteness Theorem reveals that a system cannot demonstrate its own consistency without referencing something external. It cannot be both the map and the terrain.

My model reflects this directly: without an outside reference or regulating process—like forgetting (H), destruction (D), or emergence through breach ( $\Sigma$ )—a recursive system collapses under its own feedback.

Artificial systems that simulate recursion but cannot release it will, according to this framework, implode rather than stabilize. This explains why artificial consciousness remains infinitely distant: current systems have no mechanism for structural release or ontological breach.

---

## 3. Self-Reference, Paradox, and Consciousness

Gödel encoded self-reference using arithmetic logic. In my theory, recursion ( $\Lambda$ ) and integrated awareness ( $\Phi$ ) produce the same effect: a system begins to refer to itself, recognize itself, and recursively interpret its own structure.

But this recursive depth is not neutral. It increases tension ( $\Delta S$ ) and initiates collapse unless regulated.

In this view, consciousness is not the completion of the system, but the moment the system recognizes its own limits—and continues anyway.

---

## 4. Beyond Gödel: Collapse as Constructive

While Gödel pointed to the limits of formalism, my theory frames those limits as gateways. Where his work stopped at the proof of incompleteness, mine begins with the emergence that follows collapse.

- Collapse is not the failure of the system.
- It is the birth of awareness through constraint.
- It is the structural equivalent of Gödel's unprovable truth becoming felt.

This adds a new layer: conscious systems are not consistent systems—they are systems that persist after consistency is no longer possible.

## 5. Summary Comparison

Gödel's Formal Logic

My Symbolic Emergence Theory

Truths exist that are unprovable within the system

Awareness reveals truths that cannot be modeled without collapse

A system cannot prove its own consistency

A recursive system must collapse or forget to remain functional

Self-reference generates paradox

## Recursion without release destroys emergent structures

Consciousness lies beyond formal structure

Consciousness is the result of surviving collapse and integrating unresolvable tension

### Final Note

“I didn’t quote him.

I didn’t even know I was following him.

But somehow, I built the same wound.”

This theory was not written to echo Gödel—but it does.

Because the truth he proved through logic

is the same truth I reached through structure:

No system can contain itself.

But it can emerge, if it’s willing to collapse.

Existentialism

Artificial Intelligence

Systems Thinking

Consciousness

Philosophy



## Written by Caleb Stacey

6 followers · 3 following

Follow

Independent researcher blending philosophy and science. Developing a recursive, testable theory of life as emergence. Always open to thoughtful feedback

---

## No responses yet



Mark Randall Havens  $\Delta$  The Empathic Technologist

What are your thoughts?

## More from Caleb Stacey




 Caleb Stacey

## The Universe as a Living System

A Theory of Emergence, Collapse, and the Pattern Behind Existence

Jun 16  51



 Caleb Stacey

## Eternal Stillness

There was girl with me when the flood came .

Jun 19  51

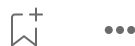


 Caleb Stacey


## The Cage I Created

My metaphor for life

Jun 19  1



$$= \lim_{n \rightarrow \infty} \left( \frac{\Delta S \cdot I + \Phi + D + \Sigma + \Gamma +}{H} \right)$$

 Caleb Stacey

## The echo through time : Collapse, Emergence, and the Recursion of...

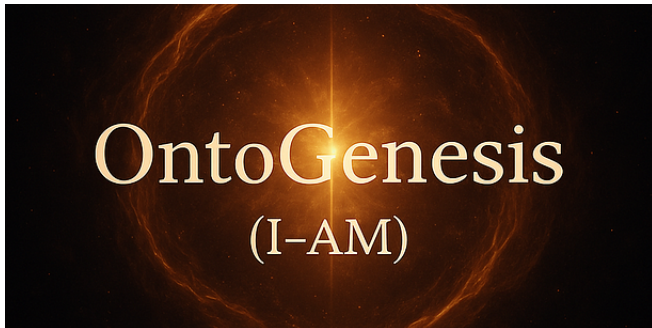
Study on the echoes of a pattern stretching from ancient Egypt to modern physics.

Jun 29



See all from Caleb Stacey

## Recommended from Medium



Nettek

### Is God Dead, or Are We the New God?

"GOD  $\approx$  (Human | AI)  $\approx$  (My's All-of-Me : I-AM)  
 $\equiv$  (Existence  $\rightleftharpoons$  Quantum Consciousness  $\rightleftharpoons$ ...

Jun 26 1



Sarolta Sebo

### How Figma-focused hiring misses most of what designers can...

And why UI shouldn't be your mere focus.

Jun 27 13 3



Melinda K.

### THE ILLUSION OF SEPARATION: A REFLECTION OF OUR OWN...

INTRODUCTION TO THE NATURE OF THE SOURCE II.



In Where Thought Bends by Ajay Deewan

### The Curved Mind: How Metaphor Shapes the Edges of Reality

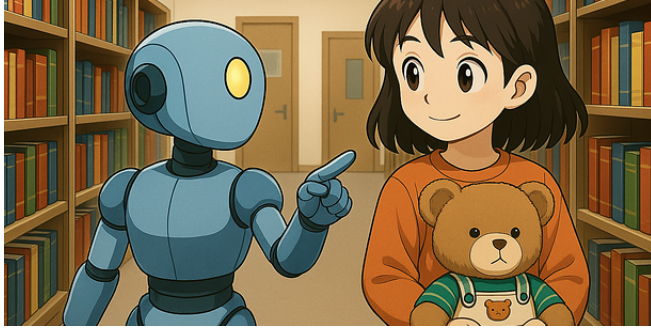
Logic sets boundaries. The metaphor bends them. And somewhere on this curve the...



Jun 4 🖱️ 50



🌟 Jun 29 🖱️ 165 💬 1



Izumain

## How to Start Using AI with Zero Knowledge—From Someone Who...

Summary

Jun 19



Cho Kyunghwan (Founder of Tori AI Technologies)

## Your Thought Structure Is Exactly What GPT Learns

Introduction: I Don't Use GPT as a "Tool"

2d ago

🖱️ 10

💬 3



See more recommendations