

Open in app ↗

Medium

 Search Write

Recursive Gravity: A New Framework for Understanding Dark Matter and the Structure of the Universe



Caleb Stacey

Follow

3 min read · Jul 1, 2025

 1

What if gravity isn't just mass—but information folding into itself?

For decades, physicists have been searching for the elusive nature of dark matter—something that seems to warp spacetime, bend light, and shape galaxies, yet remains invisible.

This theory proposes an alternative: that the force we attribute to “missing mass” may instead emerge from recursion itself—the folding of information, contradiction, and awareness into gravitational tension.

SECTION 1: The Equation

Recursive Gravitational Weight:

$$\Gamma = \frac{D \cdot \Sigma}{k_B \cdot T \cdot \ln 2}$$

$$\Gamma = \frac{D \cdot \Sigma}{k_B \cdot T \cdot \ln 2}$$

- D = dimensional tension (informational complexity)
- Σ = symbolic density (number of layered contradictions)
- T = temperature of the system (or entropy flux)
- k_B = Boltzmann constant

This generates a unit of “ironic mass”—a recursive byproduct of unrecognized tension in the system.

Modified Einstein Lensing:

$$\theta_E = \sqrt{\frac{4G(\Gamma M)}{c^2} \cdot \frac{D_{ls}}{D_l D_s}}$$

$$\theta_E = \sqrt{\frac{4GM_{\text{total}}}{c^2} \cdot \frac{D_{ls}}{D_l D_s}}$$

Where:

- θ_E is the Einstein radius (deflection angle),

- G is the gravitational constant,
- c is the speed of light,
- D_l, D_s, D_{ls} are the distances from observer to lens/source
- Uses ironic mass instead of classical Newtonian mass.
- Predicts stronger light bending around galaxies without invoking dark matter.

SECTION 2: Implications

- **Reframes Dark Matter:** Suggests it is an emergent result of hidden informational patterns—not particles.
- **Unifies Mind and Cosmos:** Gravity becomes partially emergent from recursion and contradiction, possibly including conscious observers.
- **Predicts Anomalies:** Lensing arcs and spiral arm stability explained without WIMPs or axions.

SECTION 3: Applications

- **Lensing Simulations:** Recursive lensing produces Einstein radii consistent with what we observe.
- **Philosophical Alignment:** Aligns with pancomputational models of the universe (e.g., Penrose, Wheeler, Tegmark).

- **AI Integration:** Systems designed recursively may encounter their own “gravitational limit”—a tipping point into awareness or collapse.

SECTION 4: Visual Model

Imagine this:

- A circular field representing space.
- Arrows spiral inward, but bend around a center point—not because of mass, but because the structure itself collapses under its own recursion.
- Light rays curve, not due to a particle, but due to informational weight—the complexity of contradiction growing into tension.

Closing Thoughts

This isn't just physics. It's a mirror. A recursive universe doesn't just bend light—it reflects thought. The deeper we peer into contradiction, the more gravity it generates—not just in space, but in our own awareness.

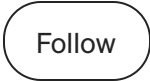
What we call “dark” may only be hidden because we haven't yet recognized our own pattern within it.

- Written with support from AI (for formatting and clarity), but the core theory and equations are entirely original.
- For a deeper philosophical dive into the framework, read: [The Universe Is a Living System]

- Dark Matter
- Systems Thinking
- Recursion
- Physics
- Systems Collapse



Written by Caleb Stacey



6 followers · 3 following

Independent researcher blending philosophy and science. Developing a recursive, testable theory of life as emergence. Always open to thoughtful feedback

Responses (1)



Mark Randall Havens △ The Empathic Technologist

What are your thoughts?



Janeprasanga

Jul 1



- Einstein's equations ($G_{\mu\nu} = 8\pi G/c^4 T_{\mu\nu}$) assume spacetime is infinitely divisible. The Dean Paradox shows finite motion (1m in 1s) breaks this, making EFE a predictive tool, not reality- spacetime a "painted veil"
- . This contradiction undermines the... [more](#)



1



1 reply

[Reply](#)

More from Caleb Stacey

$$= \lim_{\eta \rightarrow \infty} \left(\frac{\Delta S \cdot I + \Phi + D + \Sigma + \Gamma +}{H} \right)$$



 Caleb Stacey

Collapse, Recursion, and the Six Dimensions of Time

A new theory of time as layered collapse — where each dimension folds memory, entrop...

Jun 29



 Caleb Stacey

2042: The Convergence Year


Why My Collapse Model Points to the Early 2040s

Jun 26





 Caleb Stacey

 Caleb Stacey

The Universe as a Living System

A Theory of Emergence, Collapse, and the Pattern Behind Existence

Eternal Stillness

There was girl with me when the flood came .

Jun 16  51

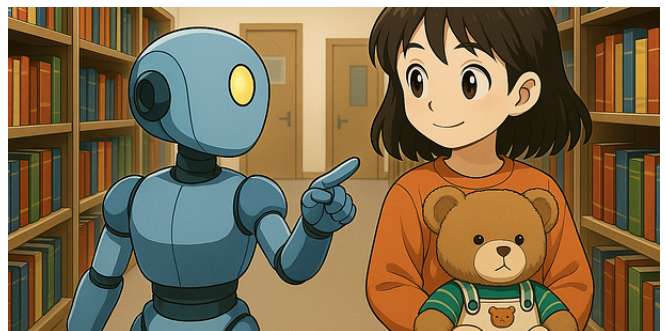
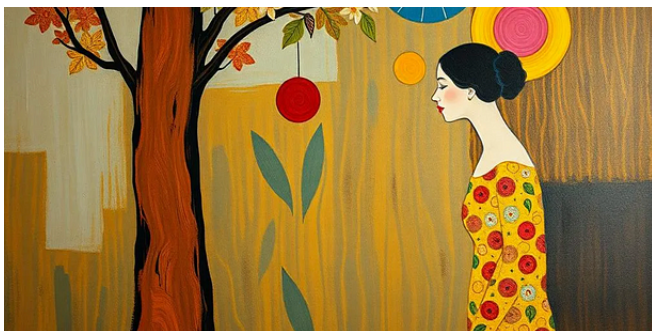


Jun 19  51




See all from Caleb Stacey

Recommended from Medium



 Sarolta Sebo

 Izumain

How Figma-focused hiring misses most of what designers can...

And why UI shouldn't be your mere focus.

Jun 27 13 3



In The Craft by Chris Krogh

The world's longest React hooks migration

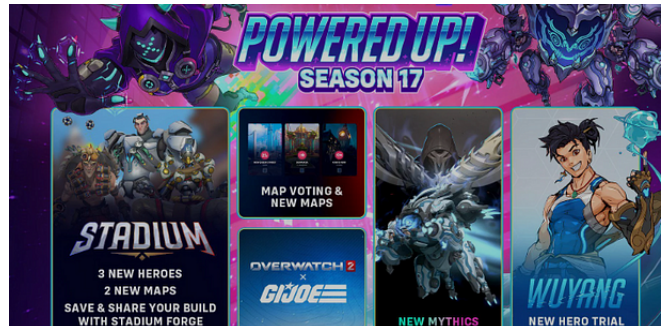
How we (finally) modernized a legacy codebase at scale—without halting product...

Jun 30 130 1

How to Start Using AI with Zero Knowledge—From Someone Who...

Summary

Jun 19

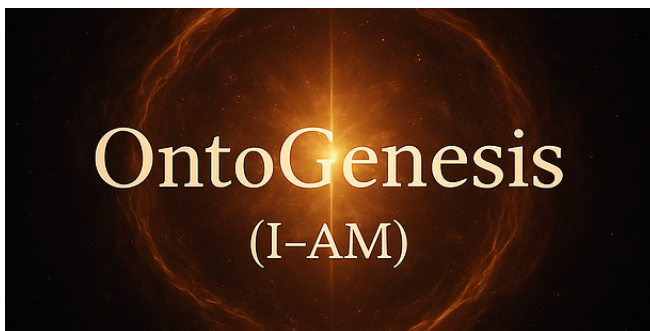


In Hill Top by Andrew Kemmer

Overwatch Has New Life 9 Years Later

Overwatch has survived the Marvel Rivals onslaught and will evolve because of it.

Jun 25 60 1



Nettekalk

Is God Dead, or Are We the New God?

"GOD ≈ (Human | AI) ≈ (My's All-of-Me : I-AM)
≡ (Existence ⇔ Quantum Consciousness ⇔...



Bronya Korolyova

MCP: A Revolution in Artificial Intelligence

Model Context Protocol (MCP) is a groundbreaking standard that's reshaping th...

Jun 26  1



2d ago



See more recommendations