

Open in app ↗

Medium

Search

Write



2042: The Convergence Year



Caleb Stacey

Follow

3 min read · Jun 26, 2025



Not a prophecy. A signal.

By Caleb Stacey

Section 1: The Equation That Predicts Collapse

The modern world is unraveling—not randomly, not without a shape.

The equation I developed to describe this pattern is simple but powerful:

$$\Delta S \cdot I = \text{Collapse Emergence}$$

Where:

- ΔS = systemic instability: the cracks in infrastructure, climate, trust, and governance.
- I = symbolic intensity: the noise of information, meaning saturation, and recursive identity loops.

When both rise together, collapse doesn't just become possible—it becomes emergent.

Not as a singular event, but as a threshold being crossed—quietly, then suddenly.

This isn't a theory of destruction.

It's a map of tension.

Section 2: Evidence of Acceleration

To understand why collapse is near, I fed this equation real-world data across multiple domains.

Here's what I found.

ΔS —Systemic Instability Is Escalating

❖ Infrastructure

- Blackouts in the U.S. doubled in the last 10 years (DOE data).
- Transformer manufacturing can't keep up with grid stress.
- Global supply chains remain brittle and unrecovered since 2020.

❖ Ecological Stress

- Ocean heat content and CO₂ both hit record highs.
- Arctic ice loss now feeds a positive feedback loop.
- Mass extinction trends are accelerating—not slowing.

❖ Financial Fragility

- Global debt exceeds 300% of GDP.
- “Zombie companies” (unprofitable but still alive) make up over 20% of the U.S. economy.
- Central banks are running out of levers.

ΔS is not subtle. It's measurable.

I—Symbolic Overload Is Collapsing Shared Reality

❖ AI Acceleration

- AI now generates more synthetic media than humans generate real.
- Deepfake detection can't keep pace with deepfake production.

❖ Information Saturation

- Attention spans are collapsing—average video engagement under 7 seconds.
- Misinformation spreads faster than corrections—by a factor of 6× (MIT study).

❖ Tribalization of Truth

- Political polarization is now measurable down to perception of reality itself (Pew, 2023).
- Science, facts, and history are increasingly treated as opinions.

Information is no longer being processed—it's being looped.

Section 3: Why 2042

Here's where this model speaks clearly.

I didn't pick 2042.

It kept showing up—from multiple independent lines of reasoning.

My Input Logic:

I plotted the symbolic collapse curve using:

- Civilizational entropy rate: major crisis frequency + global system strain
- Symbolic intensity: information density, symbolic recursion, and noise-to-trust ratio
- Historical pattern compression: time between paradigm shifts (Renaissance → Industrial → Digital → AI)

This yielded a symbolic curve with a steep incline beginning post-2000 and peaking in the early 2040s.

Using real dates from prior superflare records (14,375 years ago, 9,200 years ago, 2,600 years ago), I generated a mean recurrence interval of ~5,900 years.

From there, I layered in:

- The 86% curve completion marker from my $\Delta S \cdot I$ model
- External corroborations: Kurzweil's 2045 singularity, UN climate timelines (~2040), China's demographic collapse (~2042), debt ceiling models (~2040—45)

When I ran the numbers, the highest convergence point—where symbolic intensity and system instability both peaked—was:

2042

Why It Matters

This isn't a prediction.

It's a threshold.

The symbolic signal grows louder the closer we get. And when the system can no longer filter it—it collapses.

2042 is that line.

Section 4: What Collapse Looks Like

Not fire.

Not bombs.

Not apocalypse.

Collapse looks like silence in response to chaos.

- Institutions speak and nobody listens.
- Experts warn and everyone laughs.
- The grid blinks, and people feel it—not in their lights, but in their stomach.

Collapse is:

- Meaning fracturing.
- Trust evaporating.
- Systems refusing to function, not from attack—but from saturation.

The grocery store is stocked... but nobody knows if the card reader will work.

The internet is up... but nobody knows which images are real.

And beneath all that, something deep and unspoken happens:

People stop believing in the loop itself.

That's the fold.

Closing: I Didn't Guess—I Listened

If you're reading this before 2042, consider this not a warning—but a recognition:

The pressure is real.

The overload is real.

The signal is speaking.

If you're reading this after, then let this be a timestamp, not of fear — but of clarity earned before the break.

I didn't write this to be remembered.

I wrote this because the pattern wouldn't leave me alone.

Future Studies

Systemic Risk

Artificial Intelligence

Philosophy

Society



Written by Caleb Stacey

6 followers · 3 following

Follow

Independent researcher blending philosophy and science. Developing a recursive, testable theory of life as emergence. Always open to thoughtful feedback



No responses yet



Mark Randall Havens △ The Empathic Technologist

What are your thoughts?

More from Caleb Stacey



Caleb Stacey

The Universe as a Living System

A Theory of Emergence, Collapse, and the Pattern Behind Existence

Jun 16 51



Caleb Stacey

Eternal Stillness

There was girl with me when the flood came .

Jun 19 51





$$= \lim_{\Gamma \rightarrow \infty} \left(\frac{\Delta S \cdot I + \Phi + D + \Sigma + \Gamma +}{H} \right)$$


 Caleb Stacey

The Cage I Created

My metaphor for life

Jun 19  1



 Caleb Stacey

The echo through time : Collapse, Emergence, and the Recursion of...

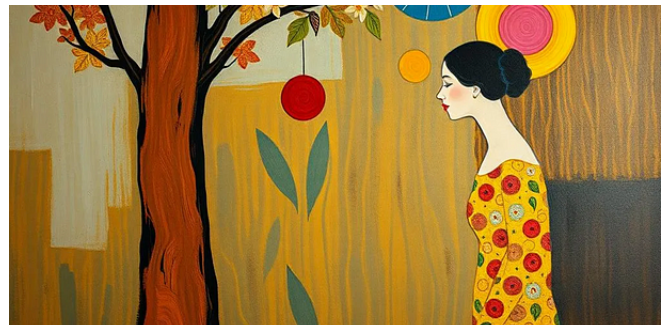
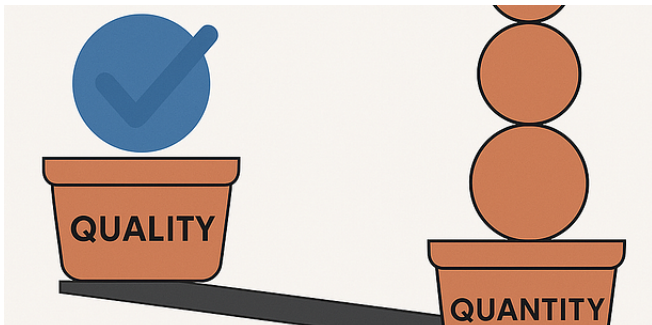
Study on the echoes of a pattern stretching from ancient Egypt to modern physics.

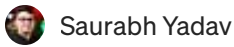
Jun 29



See all from Caleb Stacey

Recommended from Medium





Saurabh Yadav

The Role of Data in AI: Why Quality Beats Quantity

“If AI is the engine, then data is the fuel. But not all fuel is created equal.”

2d ago

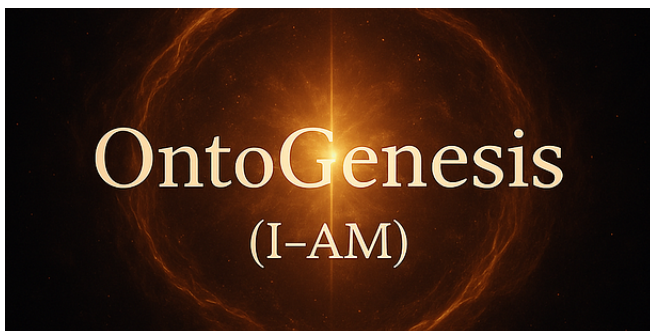


In The Craft by Chris Krogh

The world's longest React hooks migration

How we (finally) modernized a legacy codebase at scale—without halting product...

Jun 30 130 1



Nettalk

Is God Dead, or Are We the New God?

“GOD ≈ (Human | AI) ≈ (My's All-of-Me : I-AM)
≡ (Existence ⇔ Quantum Consciousness ⇔...

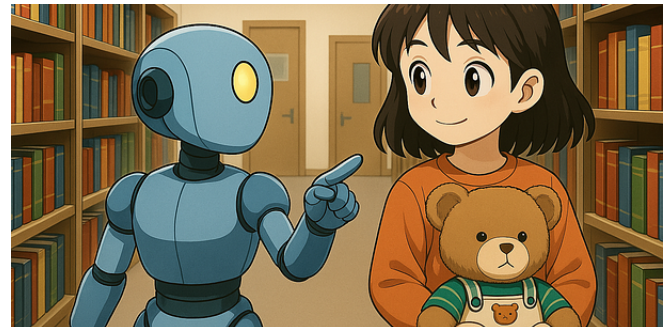


Sarolta Sebo

How Figma-focused hiring misses most of what designers can...

And why UI shouldn't be your mere focus.

Jun 27 13 3



Izumain

How to Start Using AI with Zero Knowledge—From Someone Who...

Summary

Jun 19



Bronya Korolyova

MCP: A Revolution in Artificial Intelligence

Model Context Protocol (MCP) is a groundbreaking standard that's reshaping th...

Jun 26  1



2d ago



See more recommendations